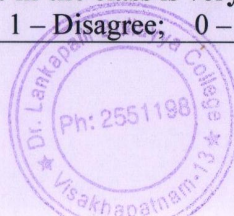


STUDENT SATISFACTION SURVEY

Name of the Teacher:

Class:

Sl.No	Questions	Response in numbers
1.	How much of the syllabus was covered by the Teacher? 85 – 100% - 4marks; 70 – 84% -3 marks; 55-69% - 2 marks; 30 -54% - 1 mark; below 30% - 0	
2.	How well did your teacher prepare for the classes? 4 – thoroughly; 3 – satisfactory; 2 – poorly; 1 – indifferently; 0 – wont teach at all	
3.	How well is the teacher able to communicate? 4 – always effective; 3- sometimes effective, 2 – just satisfactorily; 1 – generally ineffective; 0 – very poor communication	
4.	The teacher's approach to teaching can best be described as 4 – excellent; 3 – very good; 2 – good; 1 – fair; 0 – poor	
5.	Fairness of the internal evaluation process by the teacher 4 – always fair; 3 – usually fair; 2 – sometimes fair; 1 – usually unfair; 0 – unfair	
6.	Was your performance in assignments discussed with you? 4 – every time; 3 – usually; 2 – occasionally /sometimes; 1 – rarely; 0 - never	
7.	The teacher takes active interest in arranging field visits for students 4 – Regularly; 3 – often; 2 – sometimes; 1 – Rarely; 0 – never	
8.	The teaching process in the class room facilitates you in cognitive, social and emotional growth. 4 – significantly; 3 – very well; 2 – moderately; 1 – marginally, 0 – not at all	
9.	The Teacher provides multiple opportunities to learn and grow. 4 – Strongly agree; 3 – Agree; 2 – Neutral; 1 – Disagree; 0 – Strongly disagree	
10.	The teacher informs you about your expected competencies, course outcomes and programme outcomes. 4 – Every time; 3 – Usually; 2 – Occasionally / Sometimes; 1 – Rarely; 0 - Never	
11.	Your teacher does a necessary follow-up with an assigned task to you. 4 – Every time; 3 – Usually; 2 – Occasionally / Sometimes; 1 – Rarely; 0 – never	
12.	The Teacher illustrates the concepts through examples and applications. 4 – Every time; 3 – Usually; 2 – Occasionally / Sometimes; 1 – Rarely, 0 – Never	
13.	The Teacher identifies your strengths and encourages you with providing right level of challenges. 4 – Fully; 3 – Reasonably; 2 – Partially; 1 – Slightly; 0 – Unable to	
14.	The Teacher is able to identify your weaknesses and help you to overcome them. 4 – Every time; 3 – Usually; 2 – Occasionally / Sometimes; 1- Rarely; 0 – Never	
15.	The teacher makes effort to engage students in the monitoring, review and continuous quality improvement of the teaching learning process. 4 – Strongly agree; 3 – Agree; 2 – Neutral; 1 – Disagree; 0 – Strongly disagree	
16.	The teacher uses the student centric methods, such as experimental learning, participative learning and problem solving for enhancing learning experiences. 4 – To a great extent; 3 – Moderate; 2 – Somewhat; 1 – Very little; 0 – Not at all	
17.	The teacher encourages you to participate in extracurricular activities. 4 – Strongly agree; 3 – Agree; 2 – Neutral; 1 – Disagree; 0 – Strongly disagree	
18.	Efforts are made by the teacher to inculcate soft skills, life skills and employability skills to make you ready for the world of work. 4 – To a great extent; 3 – moderate; 2 – Somewhat; 1 – Very little; 0 – Not at all	
19.	The Teacher uses ICT tools such as LCD projector, Multimedia, etc., while teaching 4 – Above 90%; 3 – 70 – 89%; 2 – 50 – 69%; 1 – 30 – 49%; 0 – Below 29%	
20.	The overall quality of teaching-learning process in the class is very good. 4 – Strongly agree; 3 – Agree; 2 – Neutral; 1 – Disagree; 0 – Strongly disagree	



STUDENT SATISFACTION SURVEY TEACHER ANALYSIS 2019-20

Sl.No	Question	85 – 100% (4 marks)	70 – 84% (3 marks)	55-69% (2 marks)	30 -54% (1 mark)	below 30% (0)
1	Syllabus covered by the Teacher	58.7	29	11	0.6	0.6
2	Question	Thoroughly	Satisfactory	Poorly	Indifferently	Wont Teach at all
	Teacher prepare for the classes	56.1	26.4	16.1	0.6	0.6
3	Question	Always effective	sometimes Effective	Just Satisfactorily	Generaaly ineffective	Very poor communication
	Ability to communicate by the teacher	56.1	27.7	12.2	3.2	0.6
4	Question	Excellent	Very Good	Good	Fair	Poor
	Approach to teaching	46.4	28.3	21.2	3.2	0.6
5	Question	Always Fair	Usually Fair	Sometimes Fair	Usually unfair	unfair
	Internal Evaluation Process by the Teacher	45.1	35.4	16.1	2.5	0.6
6	Question	Everytime	Usually	Occasionally / Sometimes	rarely	never
	Performance in assignments discussion	47	33.5	14.1	4.5	0.6
7	Question	Regularly	Often	Sometimes	Rarely	Never
	Active interest in arranging field visits for students	38.06	34.19	18.06	9.03	0.6
8	Question	Significantly	Very Well	Moderately	Marginally	Not At all
	Classroom facilitates you in cognitive, social and emotional growth	41.29	31.61	20	3.87	0.6
9	Question	Strongly Agree	Agree	Neutral	Disagree	Strongly Disagree
	Teacher provides multiple opportunities to learn and grow	43.87	31.61	20	3.87	0.6
10	Question	Every time	Usually	Occasionally / Sometimes	Rarely	Never
	Teacher informs you about your expected competencies, course outcomes and programme outcomes	46.45	33.54	15.48	3.87	0.6
11	Question	Every time	Usually	Occasionally / Sometimes	Rarely	Never
	Teacher does a necessary follow-up with an assigned task to you	49.67	32.9	16.12	0.6	0.6



12	Question	Every time	Usually	Occasionally / Sometimes	Rarely	Never
	Teacher illustrates the concepts through examples and applications	52.9	30.32	13.54	2.58	0.6

13	Question	Fully	Reasonably	Partially	Slightly	Unable To
	Teacher identifies your strengths and encourages you with providing right level of challenges	45.8	29.67	20	3.87	0.6

14	Question	Every time	Usually	Occasionally / Sometimes	Rarely	Never
	Teacher is able to identify your weakness and help you to overcome them	45.16	33.54	18.06	2.58	0.6

15	Question	Strongly Agree	Agree	Neutral	Disagree	Strongly Disagree
	Teacher makes effort to engage students in the monitoring, review and continuous quality improvement of the teaching learning process	38.7	36.12	21.29	3.22	0.6

16	Question	To a great Extent	Moderate	Somewhat	Very little	Not At all
	Teacher uses the student centric methods, such as experimental learning, participative learning and proble solving for enhancing learning experiences	40	38.06	18.06	3.22	0.6

17	Question	Strongly Agree	Agree	Neutral	Disagree	Strongly Disagree
	Teacher encourages you to participate in extracurricular activities	43.8	36.77	17.41	1.29	0.6

18	Question	To a great extent	Moderate	Somewhat	Very little	Not at all
	Efforts are made by the teacher to inculcate soft skills, life skills and exmployability skills to make you ready for the world of work	44.51	30.96	21.29	1.93	1.29

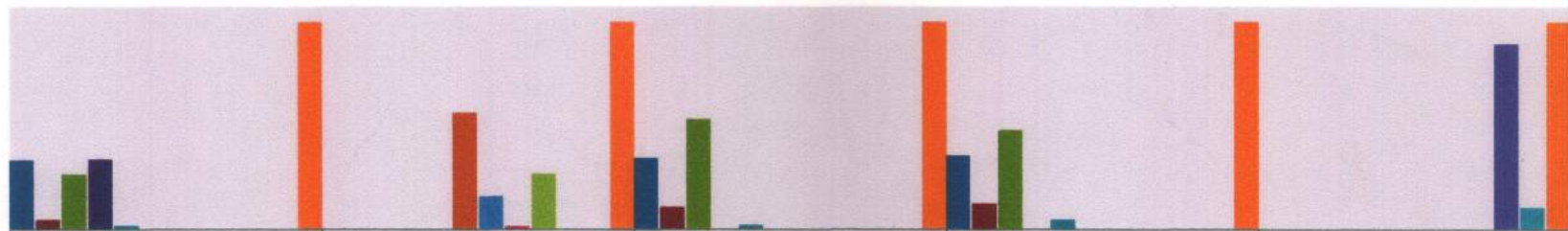
19	Question	To a great extent	Moderate	Somewhat	Very little	Not at all
	Teacher uses ICT tools such as LCD Projector, Multimedia, etc., while teaching	27.79	27.74	27.74	15.48	0.6

20	Question	Strongly Agree	Agree	Neutral	Disagree	Strongly Disagree
	Overall quality of teaching learning process in the class is very good	49.03	28.38	21.02	0.6	0.6



STUDENTS' FEEDBACK ON CURRICULUM FOR THE YEAR 2019-20

■ Excellent
 ■ Fair
 ■ Good
 ■ Very Good
 ■ Poor
 ■ Agree
 ■ Neutral
 ■ Disagree
 ■ Strongly Agree
 ■ Yes
 ■ No
 ■ Total Responses



	Content of the syllabus of the courses is interesting as well as suitable for employability	Curriculum is relevant and fulfills the expectations of the students	How do you rate the academic flexibility in terms of 4 Cs (Creative and Critical thinking, collaboration and commitment) in personality development	Relevance of skill based content such as laboratory / project / field work to the course and applicability in daily life	Specializations offered in curriculum have current content
Excellent	124	0	127	132	0
Fair	17	0	40	46	0
Good	98	0	197	177	0
Very Good	126	0	0	0	0
Poor	7	0	8	17	0
Agree	0	209	0	0	0
Neutral	0	59	0	0	0
Disagree	0	5	0	0	0
Strongly Agree	0	99	0	0	0
Yes	0	0	0	0	332
No	0	0	0	0	40
Total Responses	372	372	372	372	372



PRINCIPAL
 Dr. L. Bullaya College
 Visakhapatnam-13

PARENTS' FEEDBACK ON CURRICULUM FOR THE YEAR 2019-20

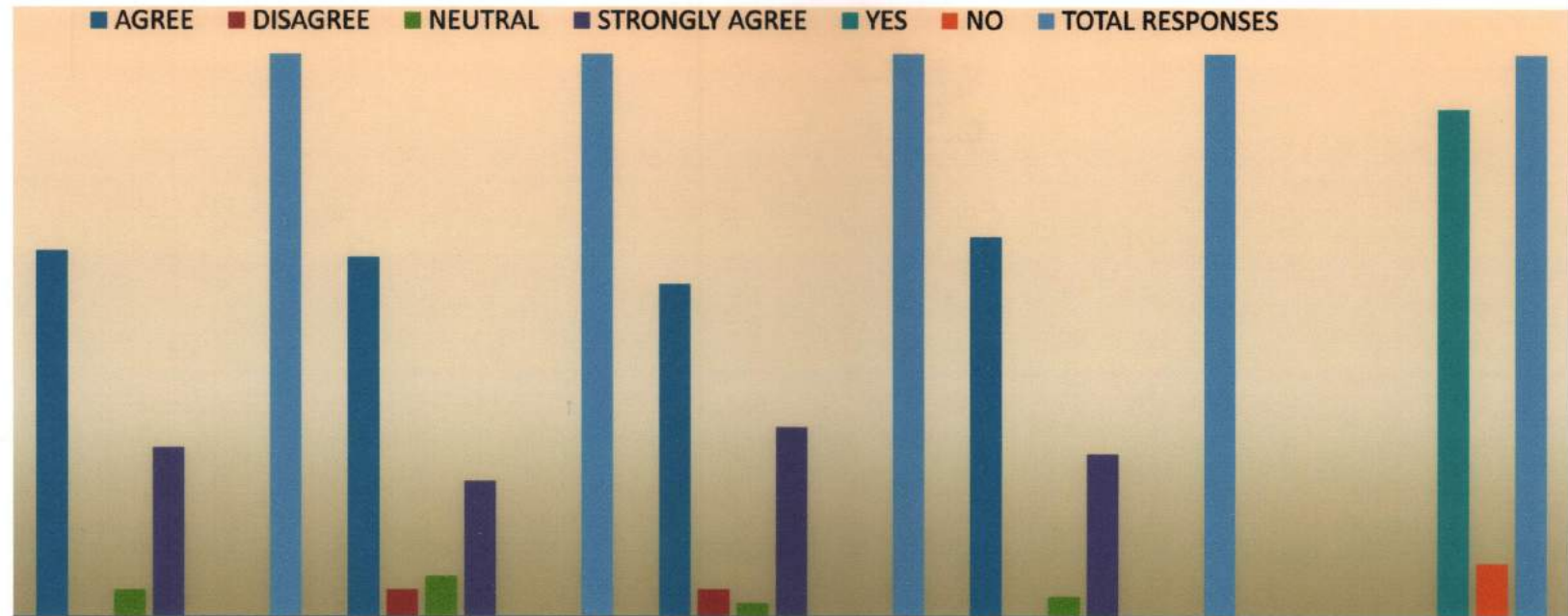


	Regular conduct of the college and quality of teaching	Rate the curricular teaching in view of job opportunities	Role of curriculum and teachers in Personality Development of your ward	Role of curriculum in enhancing the aptitude of your ward	Are you satisfied with the knowledge acquisition of your ward?
Excellent	84	54	76	63	0
Fair	9	17	10	10	0
Good	60	87	81	84	0
Poor	4	8	5	4	0
Very Good	87	78	72	83	0
0	0	0	0	0	0
Yes	0	0	0	0	227
No	0	0	0	0	17
Total Responses	244	244	244	244	244




PRINCIPAL
Dr. L. Bullayya College,
Visakhapatnam-135

TEACHERS' FEEDBACK ON CURRICULUM FOR THE YEAR 2019-20



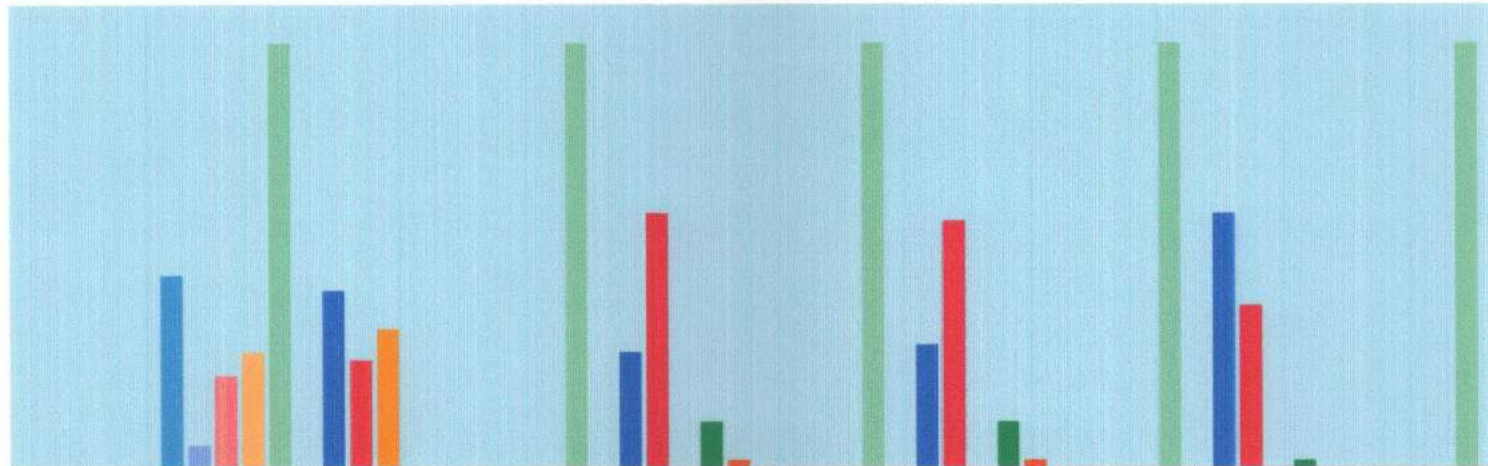
	Learning objectives / programme outcomes are well defined and need based	Syllabus is current and makes the students industry ready.	Curriculum and specializations are designed to suit the understanding ability of the students.	The curriculum provides academic flexibility to design Quizzes / Tests / Assignments / Seminars / GDs for student evaluation	The text books prescribed are current and appropriate.
AGREE	54	53	49	56	0
DISAGREE	0	4	4	0	0
NEUTRAL	4	6	2	3	0
STRONGLY AGREE	25	20	28	24	0
YES	0	0	0	0	75
NO	0	0	0	0	8
TOTAL RESPONSES	83	83	83	83	83



PRINCIPAL
 Dr. ... Bullayya College
 Visakhapatnam-13


ALUMNI FEEDBACK ON CURRICULUM FOR THE YEAR 2019-20

■ Excellent
 ■ Good
 ■ Very Good
 ■ Fair
 ■ Poor
 ■ Agree
 ■ Disagree
 ■ Neutral
 ■ Strongly Agree
 ■ Total Responses



	Curriculum fosters entrepreneurship and adaptability in arduous / challenging situations.	Career orientation and quality of teaching in college.	Relevance of course content for employability and linking theory and practice.	Quality of training in communication skills.	Overall academic atmosphere in the college.
Excellent		23	15	16	33
Good		14	33	32	21
Very Good		18			
Fair			6	6	1
Poor			1	1	
Agree	25				
Disagree	3				
Neutral	12				
Strongly Agree	15				
Total Responses	55	55	55	55	55




PRINCIPAL
 Dr. Leekapalli Bullayya College
 Visakhapatnam-13